

MATERIAL: Extruded 6063 T6 aluminum alloy.

LENGTHS: 83" and 95" lengths standard for nominal door heights.

FINISHES: All Latch Guards are stocked in Clear and Dark Bronze anodized aluminum.

ORDER: Specify outswing latch guard (LGO), length and finish. 12-24 x 3/4" self-drilling, thread-forming 410SS Phillips panhead screws, 1/4-20 through-bolts and 1/4-20 shoulder screws (for doors up to 1-3/4" thick) are provided as a standard pack unless otherwise specified. Long barrel nuts available for 2" – 2-1/4" doors. Security shoulder screws optional at extra cost.

LATCH GUARD SCREW COUNT

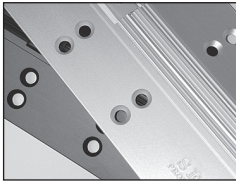
HINGE LENGTH	DOOR SCREWS	FRAME SCREWS
83"	9	9
95"	9	9

SPECIFICATIONS

Security Latch Guard

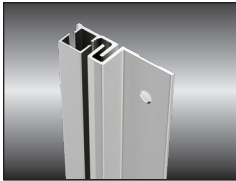


SELECT ADVANTAGES



ANODIZED AFTER MACHINING

Delivers superior wear, durability and life. Inhibits corrosion. Few hinge makers follow SELECT's lead in using this superior manufacturing process.



SUSTAINABLE

Made from recycled aluminum. Reduces environmental impact and qualifies for LEED points. *An exclusive SELECT benefit.*